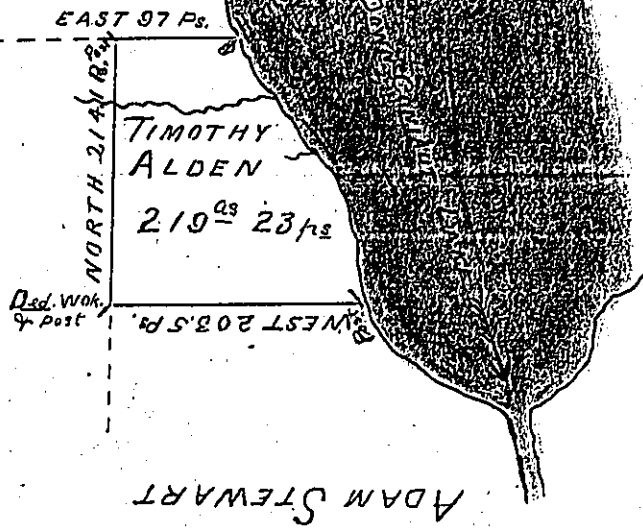


GEORGE EMLEN

ALEX W. FOSTER & Co.



COURSES AND DISTANCES  
DOWN CONIAUT LAKE BEGINING  
AT A HEMLOCK FENCE

S 51 E . 7.0 Ps
S 65 1/2 E 17.0
S 26 E 10.5
S 27 1/2 E 10.0
S 51 E 27.0
S 35 E 18.0
S 47 1/2 E 30.5
S 34 E 13.2
S 5 E 10.0
S 3 W 46.0
S 25 1/2 E 37.0
S 15 E 8.0
S 10 W 8.0
S 3 1/2 W 14.2
256.4 Ps TO A POST

In pursuance of a Warrant for 203 acres of land dated the 7th day of December 1818 was surveyed the 6th day of february 1819 for Timothy Alden the above described tract of land containing two hundred nineteen acres & twenty three perches and allowance of six per cent for Roads &c situate in Sadsbury Township Crawford County Pennsylvania and having since reexamined the same on the ground & found it to be correct february 11th 1829

James Herrington D.P. Sr.  
To Gabl. Hyster Esqr S.G. Secy  
Office of Pennsylvania

IN TESTIMONY that the above is a copy of the original remaining on file in the Department of Internal Affairs of Pennsylvania, made conformably to an Act of Assembly approved the 16th day of February, 1833, I have hereunto set my Hand and caused the Seal of said Department to be affixed at Harrisburg, this twenty fourth day of August 1903.

George R. Brown  
Secretary of Internal Affairs.